



Medium Voltage

CAMSV

Contrax straight-through joints with integrated field control
up to 24 kV

Fast, easy and reliable

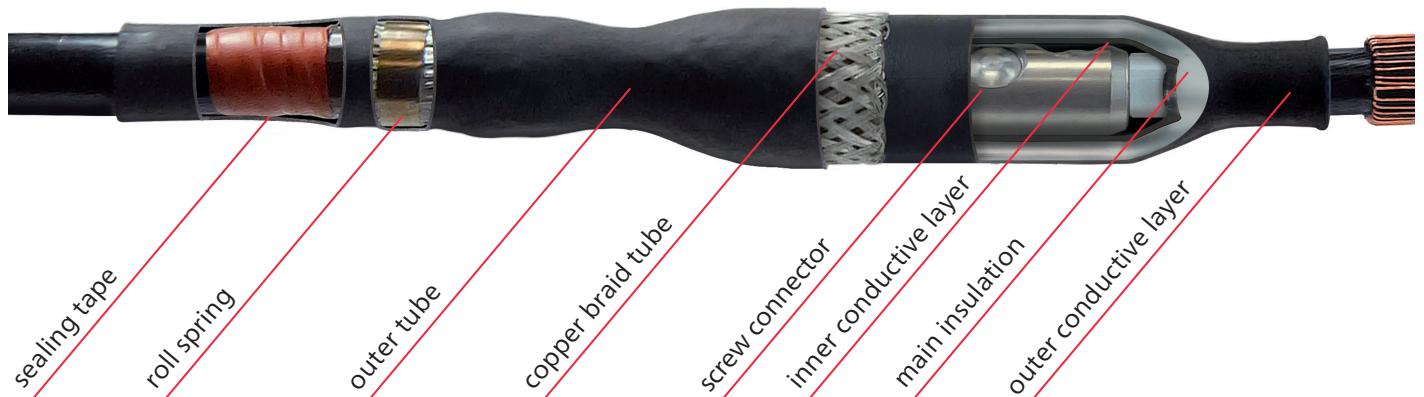
We connect your energy

www.cellpack.com

Simplified installation and reliable operation

Easy to install and fail-safe, those two characteristics distinguish the CAMSV straight-through joint from other solutions. In accordance with Cellpack's proven Contrax technology, a single-piece, slip-on insulating body integrates all major components. This simplifies greatly the assembly, thus minimizing installation errors. Through the compact, simplified design installers and network operators benefit from high reliability and reduced installation costs.

CAMSV-C are suitable for 1-core polymeric insulated cables (PVC, PE, XLPE, EPR). They allow the connection of cables with different cross sections and conductor materials even with different cable designs concerning the semi-conductive layer (removable or strippable) and screen design (wire or tape screen). Screw connectors covering a wide cross section range are included in the kit.



Product Features

- Simple and fault-tolerant installation
- Few system components (no extra stress control elements)
- Compact construction and reduced working length
- No special tools needed
- Parking position possible without stripping the cable sheath
- Wide cross section
- Individually tested (ex-works with $3U_0$)
- Outer protection system of heat shrink or pre-expanded cold shrink tube
- Made in Germany
- Type-tested (CENELEC HD 629.1)

Voltage Level

- $U_0/U(U_m)$ 6/10(12)kV – 12,7/22(24)kV

Application / Suitability

- Indoor
- Outdoor
- Underground
- Water
- Installation ducts

Test Standards

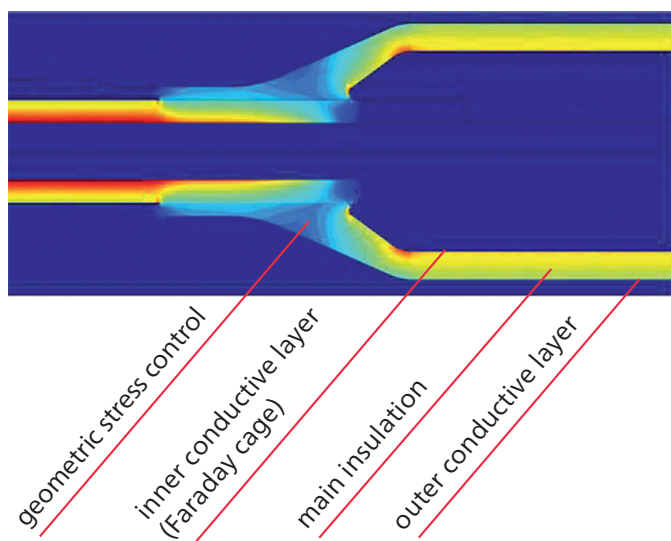
- CENELEC HD 629.1 (DIN VDE 0278, part 629-1)
- IEC 61238-1



Screw Connectors

The screw connectors offer a perfect fit in the CAMSV joints. These connectors are made of tin-plated aluminum alloy suitable for both Copper and Aluminum conductors.

- Chamfered ends guarantees easy and damage-free slipping of the silicon body
- Pre-set torque ensures smooth shearing off the bolts when tightened
- Internal grooves and offset arrangement of bolts ensure an optimum contact of the conductor.



The special shape of the joint-body implements the geometrical control principle, which regulates the electrical field. The inner conductive layer forms a Faraday cage in the connector area and makes the use of further components unnecessary.

Silicon Slip-on Body with integrated field control

The core of the CAMSV straight-through joint is the silicon pre-moulded body. Silicon material with high dielectric strength and good mechanical properties guarantees a secure connection. The inner conductive layer (which serves as Faraday's Cage) and the main insulation layer are produced in a controlled injection process.

- Through extensive quality controls and high-voltage routine tests, perfect products leave our company
- Pre-installed applicator facilitates optimal positioning of the body during installation
- Thanks to its specially designed and perfect shape, the body slips automatically into the correct position over the connector
- Minimise installation errors

Outer Protection

The outer protection is characterized by its optimal physical properties and long service life. These outer protections enable the joints to be watertight thereby preventing water penetration during operation. Depending on the application and market needs, BBC Cellpack offers three variants of outer protection.

1. Cold shrink (EPDM)
2. Heat shrink
3. Cast resin

Properties

- Good thermal stability
- Resistance to corrosion, infiltrations and dust
- Mechanical resistance
- High long-term elasticity
- Waterproof
- UV and weather resistance

Cold shrink (EPDM)

The cold shrink outer tubes made of EPDM are assembled by simply pulling out the pre-installed supporting spiral. The resulting radial contact pressure provides a reliable and durable seal. No special tools or torches are required for installation.



Heat shrink

The traditional solution (i.e) heat shrink outer protection tubes are also offered by BBC Cellpack. These heat shrink tubes are known for their mechanical characteristics. The heat shrink protection tubes are provided with a hot-melt adhesive which ensures perfect contact with the outer sheath of the cable thereby eliminating the need for any additional sealing tapes.



Cast resin

A two-component PUR cast resin is used here to form the outer protection. Due to its liquid state and favorable flow properties during installation, the cast resin fills the complete joint without any voids. Once hardened the resin offers excellent mechanical and electrical strength.

Cast resin offers the following characteristics:

- Excellent adhesion to all cable materials
- Favourable flow properties
- Resistant to alkaline earth elements
- High hydrolysis resistance
- Stabilized against UV rays

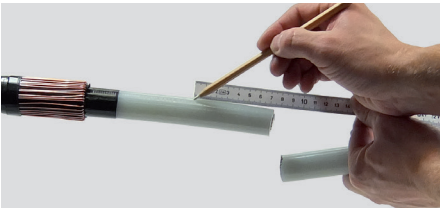


Assembly video

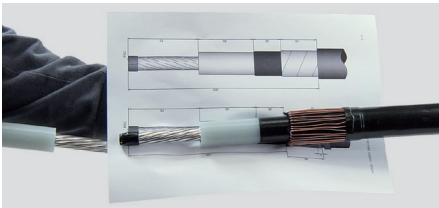


For visual clarification, a very detailed assembly video of a CAMSV-3 was created to provide the installer with an additional source of information to carry out the installation in the field. Besides cable preparation, it also shows the CAMSV joint bodies slipping onto the cores and injection of cast resin through tailor designed injection valves.

Installation steps (abstract)



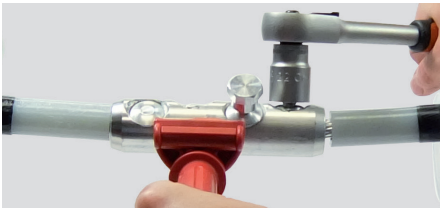
Prepare the cable



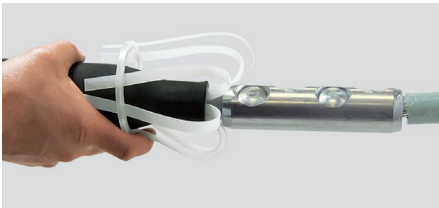
Check with the 1:1 template



Position the components



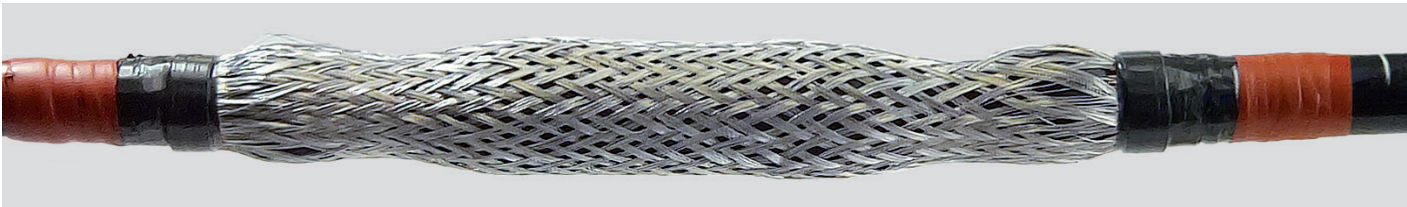
Fasten the screws



Slip on the joint body



Remove the applicator



Connect the braid tube



Apply the cold shrinkable tube



Apply the heat shrinkable tube



Apply the resin injection

Type		L mm	Number of conductors	Nominal cross section mm ²			Art.-No.
				12 kV	17,5 kV	24 kV	
U _o /U(U _m) 6/10(12)kV – 12,7/22(24)kV							
Straight through joint with cold shrinkable tube							
CAMSV-C 24kV	35-95	530	1	70 - 150	50 - 120	35 - 95	370725
CAMSV-C 24kV	95-300	600	1	150 - 300	120 - 300	95 - 300	354998
CAMSV-C 24kV	400-630	660	1	400 - 630	400 - 630	400 - 630	370726
Straight through joint heat shrinkable tube							
CAMSV-S 24kV	35-95	550	1	70 - 150	50 - 120	35 - 95	370729
CAMSV-S 24kV	95-300	650	1	150 - 300	120 - 300	95 - 300	354999
CAMSV-S 24kV	400-630	700	1	400 - 630	400 - 630	400 - 630	370730
CAMSV-3S 24kV	35-95	1000	3	70 - 150	50 - 150	35 - 95	370731
CAMSV-3S 24kV	95-300	1230	3	150 - 300	120 - 300	95 - 300	355017

BBC Cellpack GmbH
BBC Cellpack Electrical Products
Carl-Zeiss-Straße 20 | 79761 Waldshut-Tiengen
Germany
Tel. +49 7741 6007-0 | Fax: +49 7741 64989
electrical.products@cellpack.com



Further information about
our products:
electricalproducts.cellpack.com

www.cellpack.com

Grid of red dots for notes.

INTERNATIONAL PRODUCTION AND SALES COMPANIES

Europe

BBC Cellpack GmbH

Carl-Zeiss-Straße 20
79761 Waldshut-Tiengen
Deutschland

☎ +49 7741 6007-0

☎ +49 7741 64989

✉ electrical.products@cellpack.com

BBC Cellpack GmbH

Carl-Eschebach-Straße 11
1454 Radeberg
Deutschland

☎ +49 3528 41983 0

☎ +49 3528 41983 71

✉ electrical.products@cellpack.com

**Cellpack AG
Electrical Products**

Anglikerstrasse 99
5612 Villmergen
Schweiz

☎ +41 56 6181 234

☎ +41 56 6181 245

✉ verkauf.epschweiz@cellpack.com

Cellpack Benelux B.V.

Keersluisweg 13
1332 EE Almere Buiten
Niederlande

☎ +31 36 549 03 36

☎ +31 36 532 74 99

✉ info@cellpack.nl

Cellpack Polska Sp. z o.o.

ul. Matuszewska 14,
03-876 Warszawa
Polen

☎ +48 22 853 53 54

☎ +48 22 853 53 56

✉ biuro@cellpack.pl

**Behr Bircher Cellpack
BBC Italia S.r.l.**

Via Petrarca, 2
22100 Como
Italien

☎ +39 349 903 41 61

✉ epitalia@cellpack.com

**Behr Bircher Cellpack
Ibérica, S.A.**

C/.Mas Pujol, nr. 47 – Nave 4
Pol. Ind. Sector V
08520 – Les Franqueses del Vallès
Barcelona – Spanien

☎ +34 93 846 63 76

☎ +34 93 849 12 06

✉ comercial@cellpackiberica.com

**Behr Bircher Cellpack
BBC France s.à.r.l.**

277, Boulevard des Technologies
54710 Ludres
Frankreich

☎ +33.3.83.25.60.07

☎ +33.3.83.25.88.27

✉ info@cellpack-ep.fr

Middle East

**Behr Bircher Cellpack
Middle East FZ-LLC**

B12-210
Academic Zone 01-Business Center 5
RAKEZ Business Zone-FZ
R.A.K / Vereinigte Arabische Emirate

☎ +971 50 952 2800

✉ EPSalesME@cellpack.com

Asia-Pacific

**Behr Bircher Cellpack
BBC India Pvt. Ltd.**

801, 8th Floor, NDM-1, Blocks-B, Netaji
Subhash Place,
Pitampura, New Delhi-110034
India

☎ +91 11408 949 607

✉ info.india@cellpack.com

**Behr Bircher Cellpack
BBC Far East Pte Ltd**

128 Joo Seng Road # 06 – 01
Singapore 368356

☎ +65 6747 7024

☎ +65 6841 4554

✉ info@cellpack.com.sg

**Behr Bircher Cellpack
BBC Malaysia Sdn. Bhd.**

No 17, Jalan Laman Setia 7/3
Setia Business Park
81550 Gelang Patah
Johor – Malaysia

☎ +60 7 559 0570

☎ +60 7 559 0571

✉ info@cellpack.com.my

**Behr Bircher Cellpack
BBC Australia Pty Ltd**

PO Box 73
Oakdale, NSW, 2570
Australia

☎ +61 407 103 621

☎ +61 2 4659 6531

New Zealand

☎ +64 21 591 960

☎ +64 9 436 0897

✉ salesanz@cellpack.com



Youtube

BBC Cellpack Channel



LinkedIn

BBC Cellpack Electrical Products



Web

www.cellpack.com